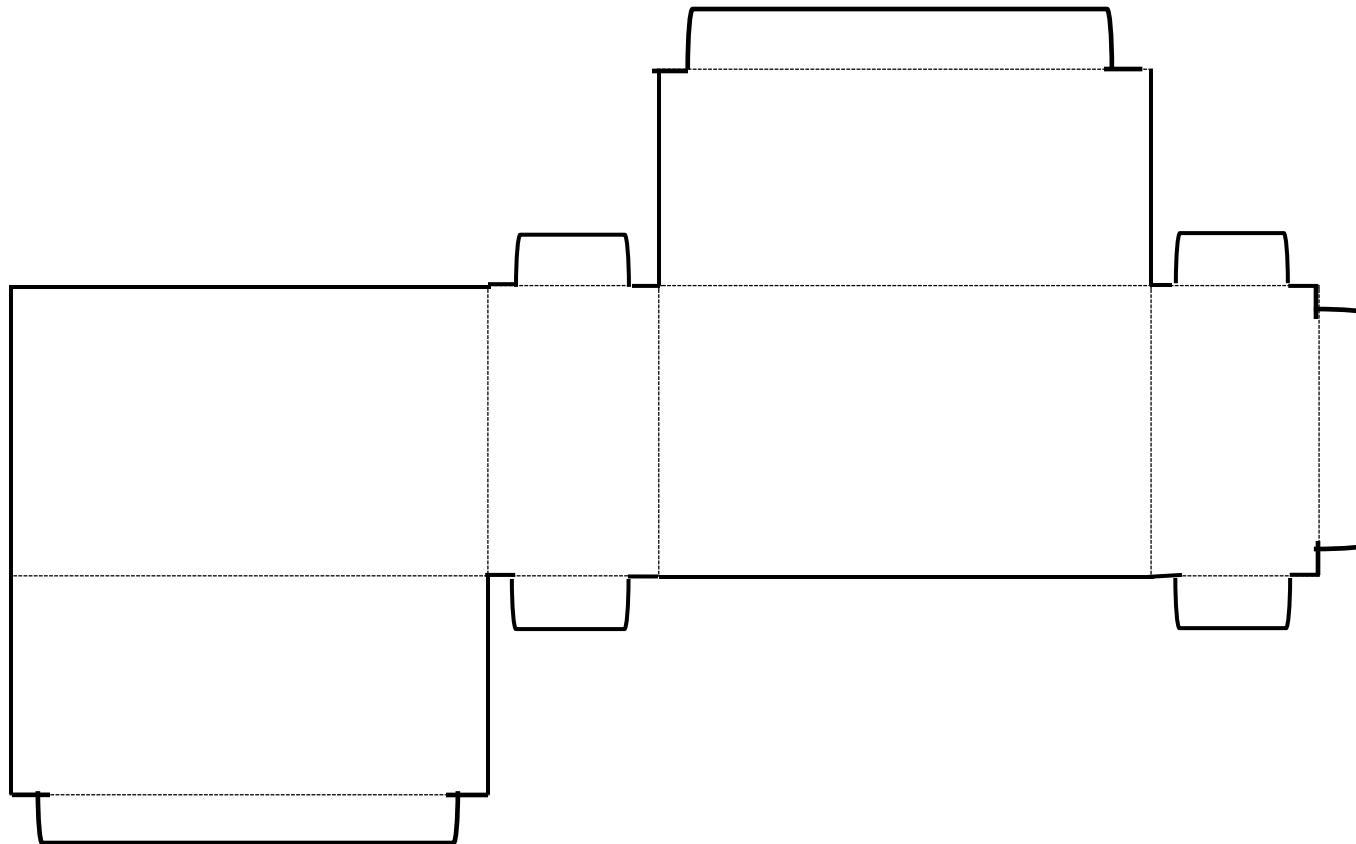
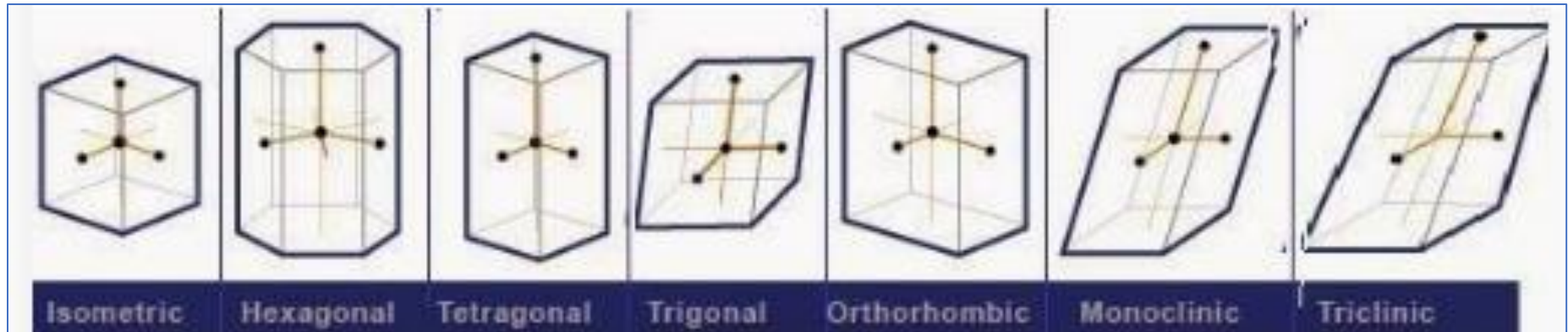


Did you know that “Rockbridgeite” is an orthorhombic shaped mineral located in and named after Rockbridge County, VA?



Directions:

1. Cut out the template along the solid lines.
2. “Score” the dotted fold-lines.
3. Pre-fold along the dotted fold-lines. You should begin to see where the tabs will attach to form the orthorhombic shape.
4. Place a small amount of glue or tape onto a tab and connect it and hold it in place for several seconds.
5. Repeat step 4 until all tabs are connected. The last tab might be most difficult—consider using a long thin but sturdy object to help direct the last tab.